

# Tray Ad Hoc

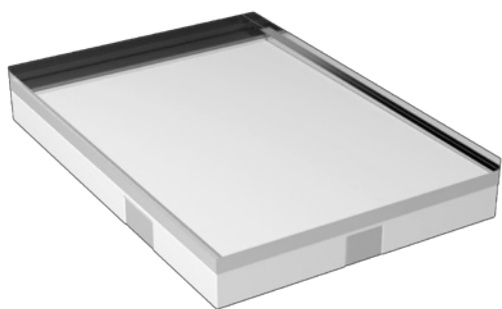
Revolutionary prefabricated draining system.  
With integrated shower enclosure, it is ideal for creating  
flush-to-floor or floor-level shower areas. Always made  
to measure, it is ready to be coated with any material  
thickness. Ad Hoc is a **patented system**.



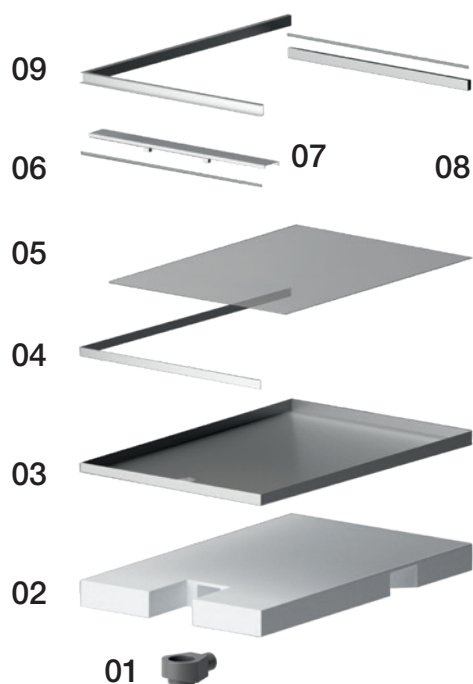
# Tray

## Ad Hoc

### Item Specifications



Steel shower tray system to be coated for flush-to-floor or floor-level showers. Possibility to choose side on which to place the drain. Drain cover grille adjoining vertical wall and full-length on side chosen. Custom dimensions according to architectural drawings, max 144X294 cm in various shapes. With drained duct for RARE shower enclosure without using silicone.



### Product Characteristics

Ad Hoc is a prefabricated system consisting of:

**01 Integrated Drain** / 360° rotating Siphon

For side connection to DN 50 duct.

**02 Support in EPS** / Already shaped for drain outlet.

**03 Steel** / AISI 304 watertight stainless steel tank, sloped 1%  
Available made to measure up to 146 X 296 cm.

**04 Water barrier**

**05 Primer layer**

**06 Tile beating block profile**

**07 Drain cover grille**

**08 Conduit** / For glass insertion.

**09 Perimeter profile** / For vertical coating support

# Tray

## Ad Hoc



### Technical Features

Components	Material	Characteristics
Soundproofing Panel / Drain Support	EPS synthesised polystyrene	<b>Density</b> 30kg/m <sup>3</sup> <b>Compressive strength</b> KPA 150 =1.5kg/cm <sup>2</sup>
Drain	TECE GmbH	<b>Drain</b> Adjustable side DN50 <b>Flow</b> <i>Slim</i> 0.7 l/sec <i>Normal</i> 0,8 l/sec <b>Water in the Siphon</b> <i>Slim</i> 25 mm <i>Normal</i> 50 mm sec.din en 1253
Steel tank	Stainless steel	Aisi 304 / Thickness 1 mm <b>Slope 1 %</b> speed outflow 0.4 l / sec * <b>Slope 2 %</b> speed outflow 0.6 l / sec * * Indicative parameters that vary according to the type of coating
Primer	Water-based bituminous elastomer that can be coated with cement mortar	Bituminous elastomer single component paste with elongation at break of 204 ± 40% according to ntf 46002 and crack bridging > 3.0 according to EN14981

### Finishes

- **Shower tray** that can be covered with any material and thickness.
- **Drain cover grille** available in: polished steel, satin finish steel or can be coated ( 30% reduced flow capacity).

### Optional

- Recommended **additional drain** with a maximum grille length of 160 cm.
- **Different shapes** from rectangular or square
- **Basin edges** different from the standard (see attached sheet)
- **Slopes** other than the standard (see attached sheet)
- **Hair sieve** (40% reduced water flow capacity)
- **Anti-odour siphon** with membrane
- **Soundproofing mat**

# Tray

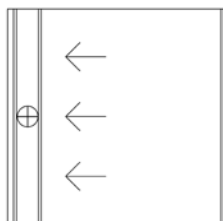
# Ad Hoc

## TYPES OF SLOPES

N4 slope types available.

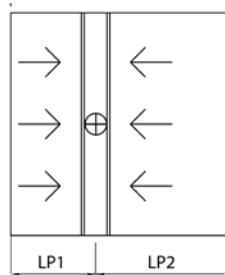
### 01 STANDARD Slope / Side Grille

Standard slope 1%  
Optional slope 2%



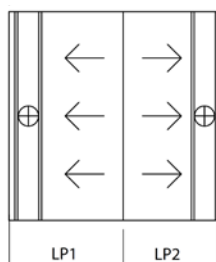
### 02 DOUBLE Slope / Central Grille

Specify the length for each slope  
Slope 1 / Slope 2



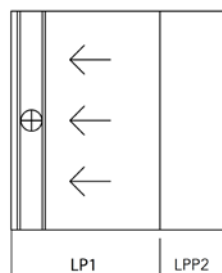
### 03 DOUBLE Slope / Double Side Grille

Specify the length for each slope  
Slope 1 / Slope 2



### 04 Floor Slope / Side Grille

Specify the length for each slope  
Slope 1 / Slope 2

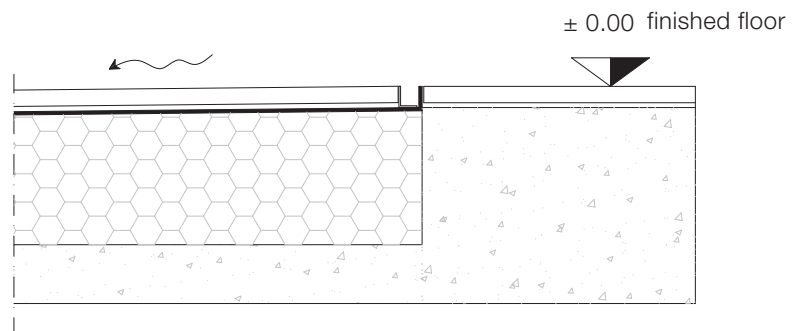


# Tray Ad Hoc

## TYPES OF BASIN EDGE N5 types of edge available.

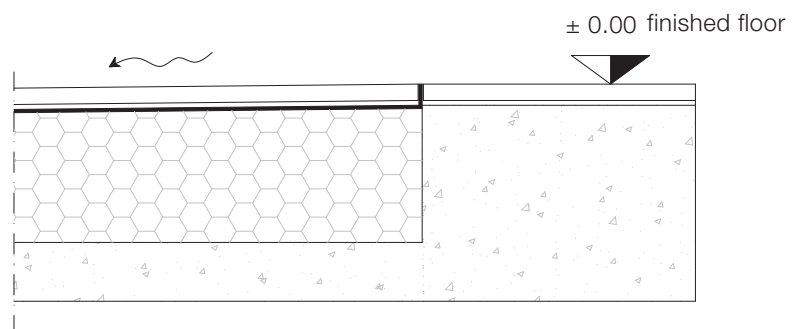
### 01 STANDARD edge

Tank edge height equal to height 00.  
Glass insertion duct. Integrated shower enclosure.



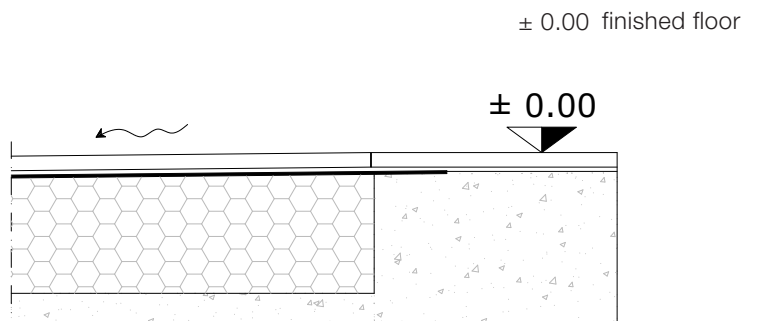
### 02 Edge WITHOUT DUCT

Tank edge height equal to height 00.  
Without duct. Supported shower enclosure.



### 03 TURNED edge

Tank edge height equal to screed level and turned outside by 50mm. Supported shower enclosure.

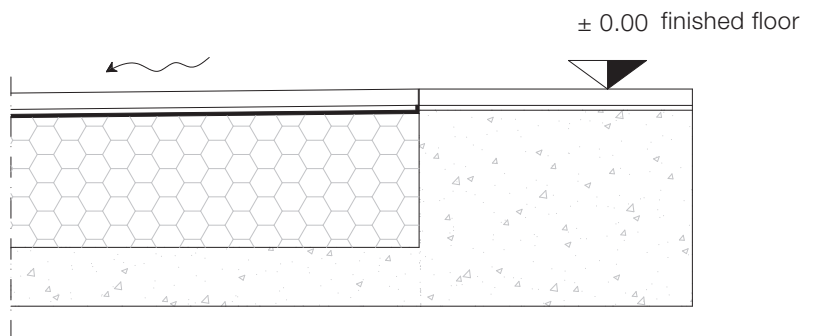


# Tray Ad Hoc

## TYPES OF BASIN EDGE N5 types of edge available.

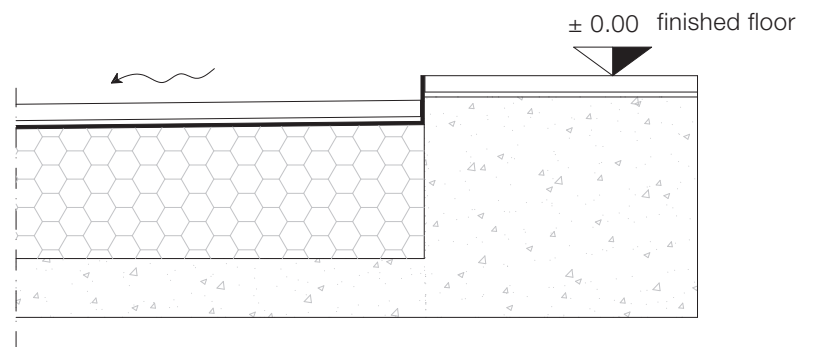
### 04 LOWERED edge

Tank edge height equal to screed level.  
Supported shower enclosure.



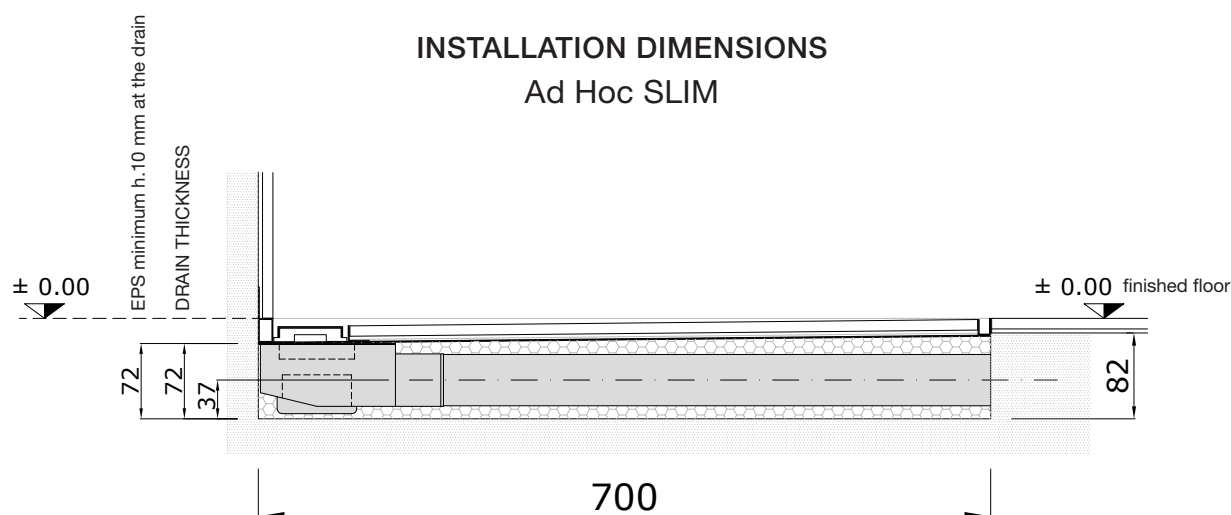
### 05 STEP Edge

Tank edge height equal to height 00. Height of sloped floor inside the basin made to measure according to specifications in the order phase.



# Tray

# Ad Hoc



SLOPING SIDE	SCREED H	
	SLOPE 1%	SLOPE 2%
da 600 a 700 mm	82 mm	89 mm
da 700 a 800 mm	83 mm	91 mm
da 800 a 900 mm	84 mm	93 mm
da 900 a 1000 mm	85 mm	95 mm
da 1000 a 1100 mm	86 mm	97 mm
da 1100 a 1200 mm	87 mm	99 mm
da 1200 a 1300 mm	88 mm	101 mm
da 1300 a 1400 mm	89 mm	103 mm
da 1400 a 1500 mm	90 mm	105 mm
da 1500 a 1600 mm	91 mm	107 mm
da 1600 a 1700 mm	92 mm	109 mm
da 1700 a 1800 mm	93 mm	111 mm
da 1800 a 1900 mm	94 mm	113 mm
da 1900 a 2000 mm	95 mm	115 mm

## Note

### FINISHED FLOOR HEIGHT.

- + Floor height
- + Flat internal horizontal coating
- + Glue

### EPS THICKNESS UPON REQUEST.

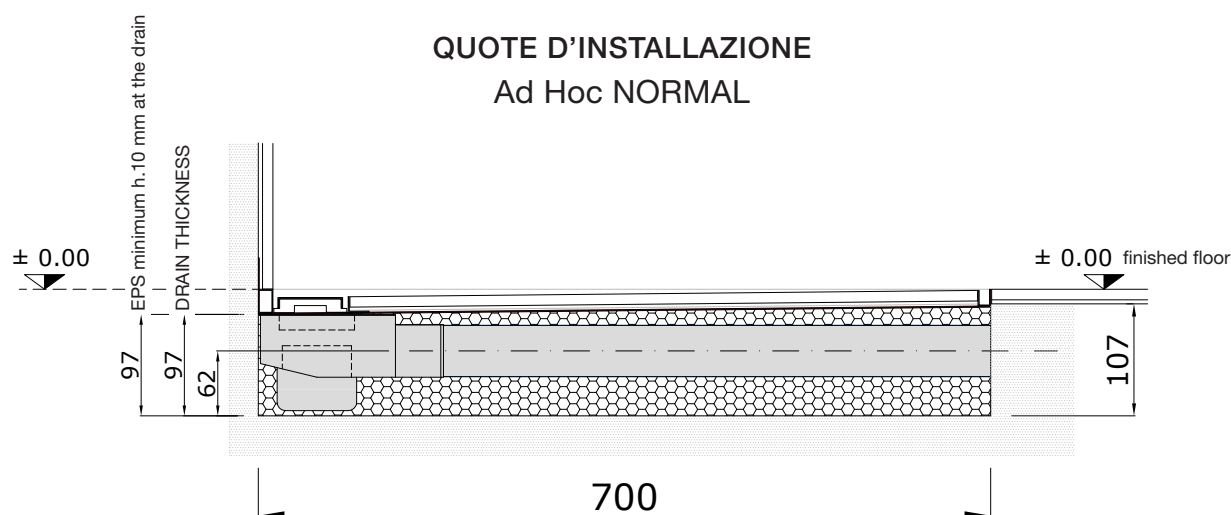
Minimum h. 10 mm at the drain

# Tray

# Ad Hoc

## QUOTE D'INSTALLAZIONE

### Ad Hoc NORMAL



SLOPING SIDE	SCREED H	
	SLOPE 1%	SLOPE 2%
da 600 a 700 mm	107 mm	114 mm
da 700 a 800 mm	108 mm	116 mm
da 800 a 900 mm	109 mm	118 mm
da 900 a 1000 mm	110 mm	120 mm
da 1000 a 1100 mm	111 mm	122 mm
da 1100 a 1200 mm	112 mm	124 mm
da 1200 a 1300 mm	113 mm	126 mm
da 1300 a 1400 mm	114 mm	128 mm
da 1400 a 1500 mm	115 mm	130 mm
da 1500 a 1600 mm	116 mm	132 mm
da 1600 a 1700 mm	117 mm	134 mm
da 1700 a 1800 mm	118 mm	136 mm
da 1800 a 1900 mm	119 mm	138 mm
da 1900 a 2000 mm	120 mm	140 mm

### Note

#### FINISHED FLOOR HEIGHT.

- + Floor height
- + Flat internal horizontal coating
- + Glue

#### EPS THICKNESS UPON REQUEST.

Minimum h. 10 mm at the drain



# Tray

# Ad Hoc

## DRAIN TYPE



### “Normal” Drain

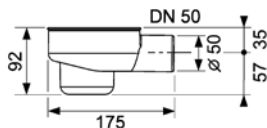
with DN50 side drain

#### Description:

Drainage well, already installed in the Ad hoc tray. 360° revolving well, for lateral connection to the DN 50 drain pipe, with extractable siphon.

#### Characteristics:

Water height in the well = 50 mm according to DIN EN 1253  
Drainage flow according to DIN EN 1253, in the presence of water accumulation equal to 10 mm/20 mm on the grille:  
«Standard» steel grille: 0.8 l/s (without siphon 0.9 l/s)  
Tile-covered grille: 0.6 l/s (without siphon 0.65 l/s)



### “Slim” Drain

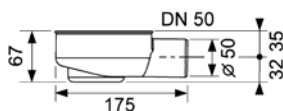
with DN50 side drain

#### Description:

Drainage well, already installed in the Ad hoc tray. 360° revolving well, for lateral connection to the DN 50 drain pipe, with extractable siphon.

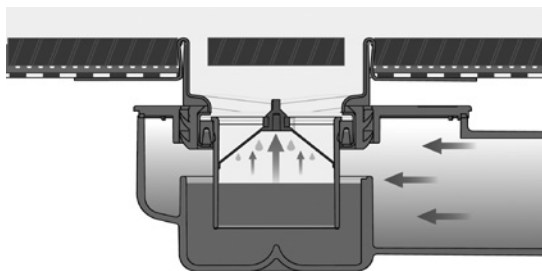
#### Characteristics:

Water height in the well = 25 mm  
Drainage flow according to DIN EN 1253, in the presence of water accumulation equal to 10 mm/20 mm on the grille:  
«Standard» steel grille: 0.7 l/s (without siphon 0.7 l/s)  
Tile-covered grille: 0.5 l/s (without siphon 0.55 l/s)



# Tray Ad Hoc

## OPTIONAL EXTRA



### Anti-odour membrane siphon for drains

Immersion siphon with internal sealing membrane, to prevent water from evaporating due to unpleasant odours and parasites



Standard Siphon

Anti-odour Siphon

"Slim" well – Code 660016

"Normal" well – Code 660018

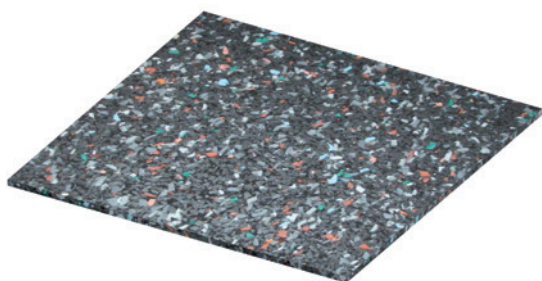
"Slim" well – code 668010

"Normal" well – code 668011



### Hair sieve for drains

Immersion siphon with internal sealing membrane to prevent water from evaporating due to unpleasant odours and parasites.



### TECE drainbase soundproofing mat

Composed of high-strength rubber granules and consolidated on a recycled base with polyurethane elastomer. Useful to easily and effectively soundproof the shower area; suitable both for renovations and new buildings. Sound installation of shower setting. Normal conforms to the highest acoustic insulation requirements according to DIN 4109 edition 2001-01 and the highest level of sound protection sst iii according to the vdi 4100 edition 2012- 10 sheet 1.25 m x 1.25 m x 6 mm / code 660001

# Tray Ad Hoc

## GLUES & GROUTINGS for tile laying

LAYING TYPE	MAPEI CODE	KERAKOLL CODE	NI EN 12004 CODE
HORIZONTAL LAYING	KERAFLEX KERAFLEX MAXI S1	BIOFLEX S1	C2TE C2TES1
HORIZONTAL GROUT	KERACOLOUR	FUGABELLA COLOR	CG2WA + FUGOLASTIC
VERTICAL LAYING	KERAFLEX KERAFLEX MAXI S1 KERALASTIK ( GREATER performance on the steel band of the shower tray - 3 cm high strip along the wall sides of the Ad Hoc tray	H4 NO LIMITIS BIOFLEX S1	C2TE C2TES1 R2
VERTICAL GROUT	KERACOLOUR ( it being a cementitious product it is not waterproof, as per EN12004 regulation, waterproofing must not be entrusted to the grout, but to a continuous surface, such as mapelastik )	FUGABELLA COLOR	CG2WA + FUGOLASTIC
FEPOXY GROUT ( waterproof alternative to non-waterproof cement- based grout )	KERAPOXI CQ	SERIE FUGALITE	RG
PERIMETER SILICON	MAPESIL ( la normativa uni en 12004, prescrive che l'unione tra il piano orizzontale e quello verticale, venga effettuata con prodotto siliconico, l'unico in grado di assorbire le dilatazioni ) disponibili 26 colori	SILICONE COLOR	AC
FLAT JOINT / EXTERNAL FLOOR	MAPESIL	SILICONE COLOR	AC

Tray

# Ad Hoc

## EPOXY SCREED

for laying resin or cementitious mortars

LAYING TYPE	KERAKOLL CODE
HORIZONTAL EPOXY SCREED LAYING	EP21 QUARTZ 5.12
RESIN	FLOORZERO + NET 90 CEMENT RESIN 1 NEW, 2, 3, 4.
VERTICAL LAYING	AQUASTOP 120
INTERRUPTION OF CONTINUOUS SURFACES	HYPERFLEX HYBRID CRYSTAL (transparent)
FLAT/EXTERNAL FLOOR JOINT	SILICONE COLOR

# Tray Ad Hoc

## ACOUSTIC INSULATION

The results of the forecast tests of the slim and normal stratigraphies are shown below. Two different solutions have been studied: 20+5 cm concrete and masonry slabs and 150 mm reinforced concrete 2300 kg/m<sup>3</sup> solid slab, both with 40 mm screed between the slab and the “shower package”. It should be noted that as a precaution, the area considered was that of the shower.

Stratigraphy	R <sub>w</sub> [dB]	R' <sub>w</sub> [dB]	Drainage typical L <sub>p</sub> dB(A) *	K1	K4	Through L <sub>p</sub> dB(A)	SIA average sensitivity dB(A) minimum requirement	DIN 4109 dB(A)	VDI dB(A)
Slim concrete and masonry slab	59	55	64	-4	-12	25	38	30	Livello 1 < 30
									Livello 2 < 27
									Livello 3 < 24
Slim concrete and masonry slab	62	58	64	-4	-12	22	38	30	Livello 1 < 30
									Livello 2 < 27
									Livello 3 < 24
Slim reinforced concrete slab 150 mm	61	57	64	-4	-12	23	38	30	Livello 1 < 30
									Livello 2 < 27
									Livello 3 < 24
Normal reinforced concrete slab 150 mm	63	59	64	-4	-12	21	38	30	Livello 1 < 30
									Livello 2 < 27
									Livello 3 < 24

Precautionary values obtained by subtracting 4dB in consideration of commissioning. The soundproofing power increases by approximately 1 dB per additional cm of screed. RARE cannot guarantee compliance with the regulations in post-installation measurements, as the latter and the construction of the building itself are carried out by different parties. The SIA 181 standard does not include actual directives for the control of sanitary appliances. For more information, see the report by Suisse Consulences Sagl.