

Shower Base

Steel

Steel by RARE is the prestigious shower system that combines the design of stainless steel with the warmth of wood. The infinite modularity is the characteristic of the project: it can be realised in different sizes to meet any practical and aesthetic need.



Shower Base

Steel

Item Specifications

Steel shower tray system with solid wood slats for flush-to-floor or floor level showers. With drained duct for RARE shower enclosure without using silicone.



Description

Steel shower tray made of stainless steel tank and Iroko solid wood slats. Perimeter profiles kit for covering support and shower enclosure insertion. Siphoned drainage drain included.

Technical Features

“Silfra” DN 50 adjustable **drain**

Watertight tray in Aisi 304 steel measuring max 90 x 217 cm

Shower Base

Steel

Product features



Footboard

The footboard made up of easily removable staves is made of: iroko solid wood, whose particular structure of its fibres rich in oleoresins makes it a wood with unique qualities: water-resistant, resistant to fungi, insects and woodworms.



Basin

The water collection basin is made of a sheet of 18/10 stainless steel, Aisi 304 material of excellence for its resistance and ease of cleaning. Through an ingenious system of profiles, the shower enclosure is installed without the need for silicone inside the tank, guaranteeing perfect water tightness. The coating is laid inside the tank avoiding possible infiltrations.



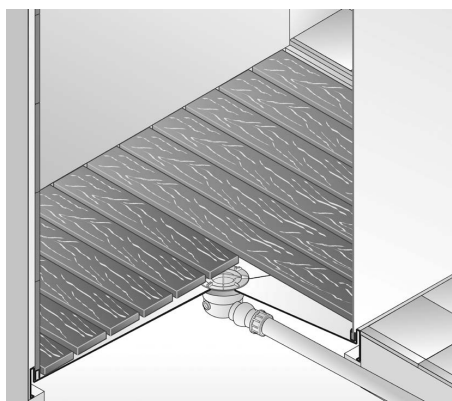
Drain

The Silfra siphoned drain for a fully inspectable shower tray is equipped with a "ring-proof" tank.

Shower Base

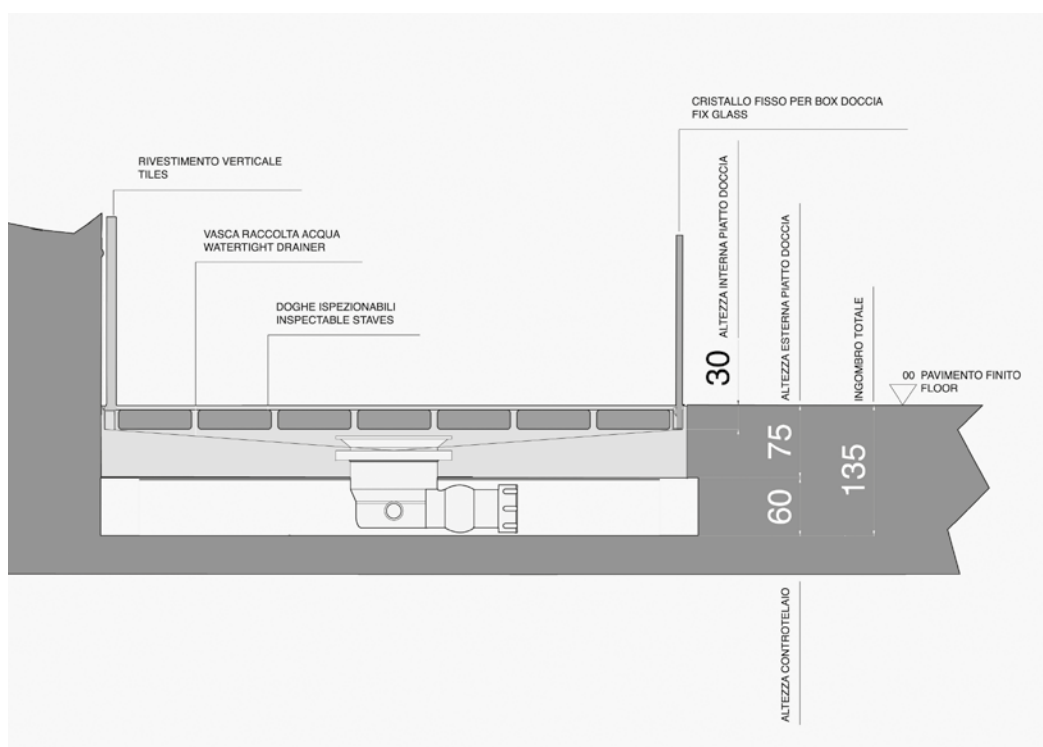
Steel

Installation heights



IN Version

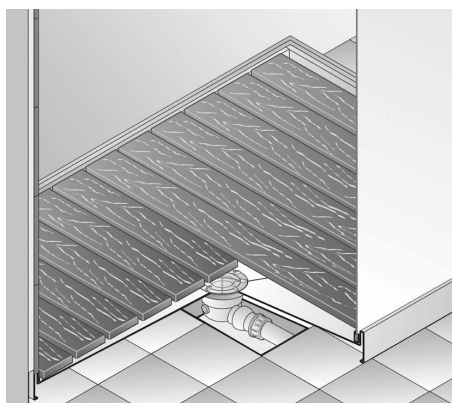
It requires a depth of 135 mm from the floor level in order to be able to position the drain.



Shower Base

Steel

Installation heights



OUT Version

It requires a depth of 60 mm from the floor level in order to be able to position the drain.

